



# The Immigrant Education Society and Settlement Services in Calgary

Cesar Suva, Ph.D  
Research & Program Development

March, 2020

[cesarsuva@immigrant-education.ca](mailto:cesarsuva@immigrant-education.ca)

# (Newcomer) Integration

## Socio-cultural or political perspective

- Question of identities/changing identities
- Adoption/loss blending of different cultures
- Learning new language\*

## Economic perspective

- Getting a local job
- Credentials recognition
- Poverty and opportunity

# Newcomer Settlement

Obstacles to successful settlement (Hordyk, 2015: 76)

social isolation,

language hardship,

issues with employment,

housing questions,

transportation,

barriers to health, education and government service access

# Healthy Communities

How do newcomers fit into healthy communities?

- Prescribing what integration looks like – impact on emotional well-being?
- Multiplexity in integration - No one pathway to integration
- Ensuring newcomers have emotional well being can empower them to find their own optimal pathway to integration?

Community Building vs. Integration?

- Participation in ‘building community’ vs. ‘being admitted’ to it
- Sense of ownership and ‘belongingness’
- Parallels with ensuring emotional well-being?

# Determinants of Health

Aboriginal status

disability

early life

education

employment and working conditions

food insecurity

health services

gender

housing

income and income distribution

race

social exclusion

social safety net

unemployment and job security

**Source:** Raphael, D. (2009). Social Determinants of Health: Canadian Perspectives, 2nd edition. Toronto: Canadian Scholars' Press.

# Determinants of (Integration?)

Aboriginal status

disability

early life

education

employment and working conditions

food insecurity

health services

gender

housing

income and income distribution

race

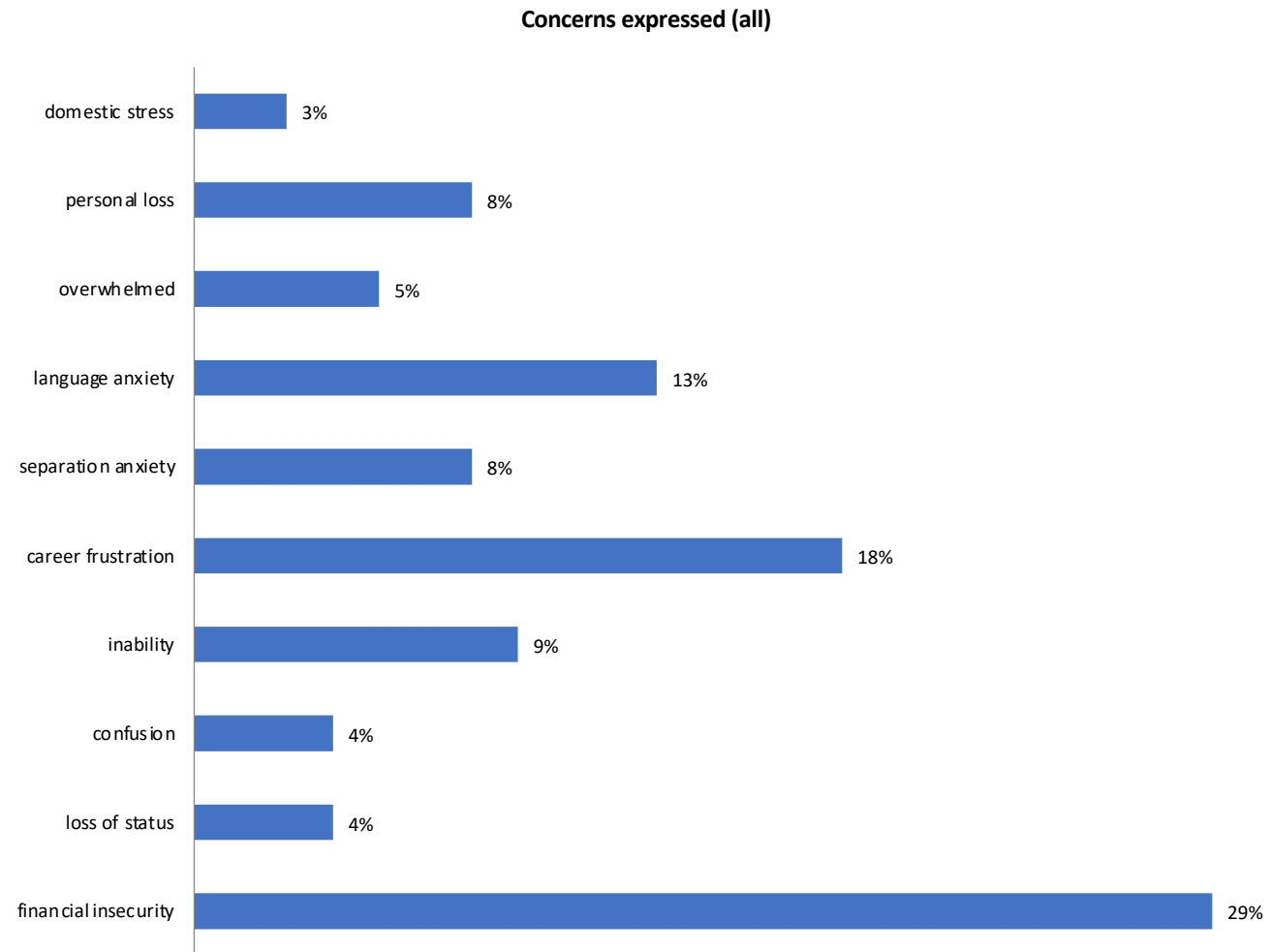
social exclusion

social safety net

unemployment and job security

**Source:** Raphael, D. (2009). *Social Determinants of Health: Canadian Perspectives*, 2nd edition. Toronto: Canadian Scholars' Press.

# 92 Syrian Refugees' top concerns (Calgary, Canada, 2017-2018)



# IRCC call for proposals 2019 Immediate Outcomes

**Immediate outcome 1:** Access to IRCC-funded settlement services is facilitated

**Immediate outcome 2:** Increase understanding of client settlement needs and appropriate linkages to other services

**Immediate outcome 3:** Clients increase knowledge of life in Canada

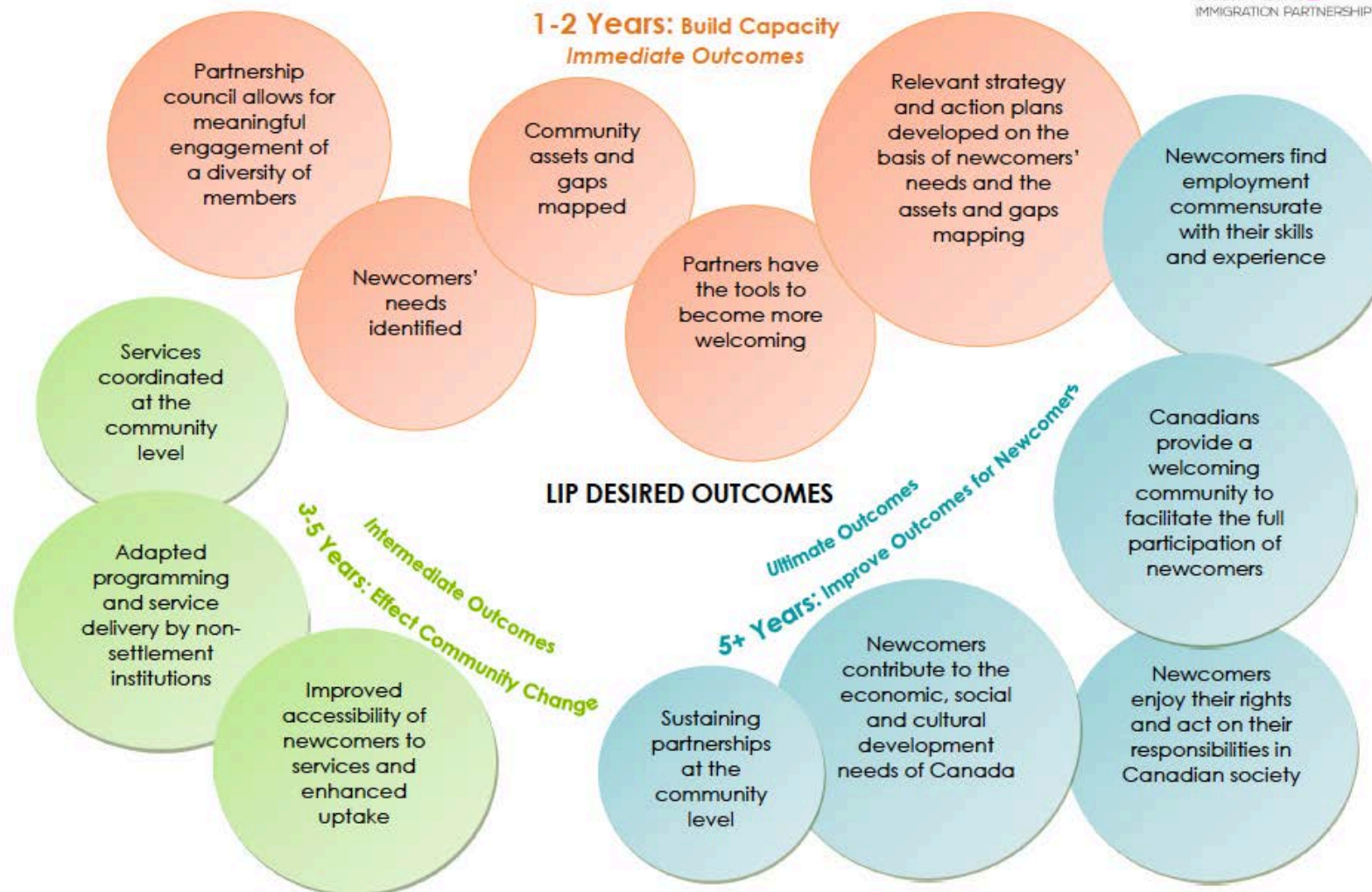
**Immediate outcome 4:** Clients improve official language skills

**Immediate outcome 5:** Clients acquire knowledge, skills and connections to prepare for the Canadian labour market

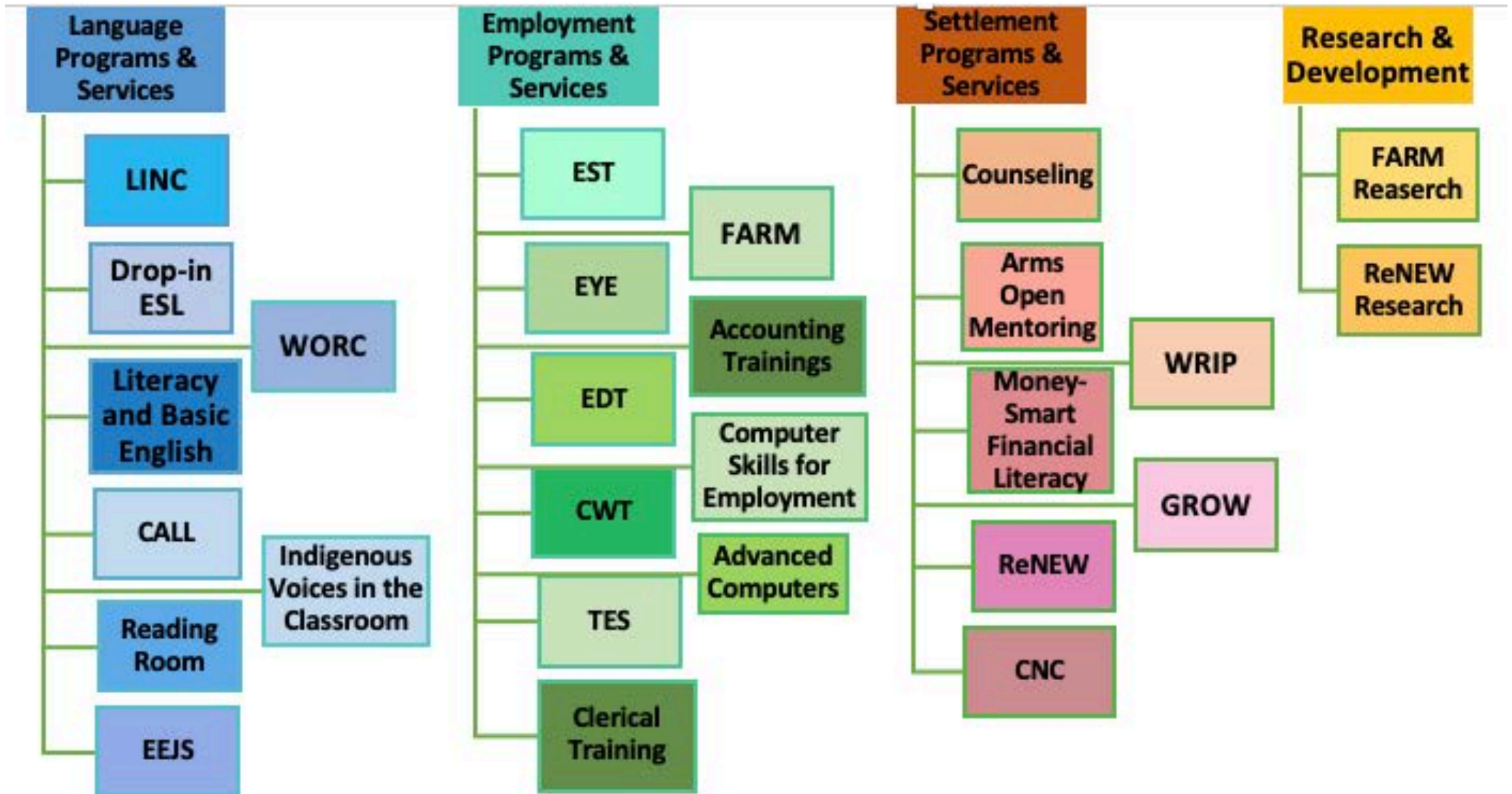
**Immediate outcome 6:** Clients increase their participation in communities and social networks

**Immediate outcome 7:** Partners deliver responsive and coordinated settlement and community services





# The Immigrant Education Society (TIES)



# The Immigrant Education Society

- Settlement agency in Canada
  - Provides settlement programming
  - Language training from literacy level to the CLB 3 – which is the minimum usually considered for employment
  - Employment training
- Non-governmental organization/charity
- Individual programming funded by all levels of government
- Additionally funded by private foundations and individuals in Calgary
- funders typically fund individual programs with fixed lifespans

# Funders

- **Federal:**
  - Service Canada
  - Immigration Refugees and Citizenship Canada (IRCC)
    - LINC
    - SDI
  - Social Science and Humanities Research Council
- **Provincial**
  - Alberta Labour
  - Alberta Multiculturalism and Status of Women
- **Municipal**
  - City of Calgary
- **Private**
  - Calgary Foundation
  - Calgary Learns

# The Immigrant Education Society

- Evolved from being a site solely for Language Instruction to Newcomers to Canada (LINC) programming.
- Representative of most settlement agencies in Alberta
- Research arm in cooperation with local institutions
- TIES and its counterparts in Calgary
  - Occupying intermediary space between formal (state) and informal (community)?
  - programming can at times manifest how informality can move into formality and vice versa

# The Immigrant Education Society

## **What is Research and Program Development at TIES?**

- Developing evidence based programming
- Address inconsistency issues inherent in a 'grant to grant' environment
- Disciplining the new programming down research pathways
- In cooperation with a research institution

# The Immigrant Education Society

## **Current research projects:**

- **Refugee and Newcomers Emotional Wellness (ReNEW)**
  - 3 year grant funded by Immigration Refugees and Citizenship Canada (IRCC)
  - Collaboration with the University of Calgary
  - Examination of settlement programming and practices addressing emotional wellness of refugees and newcomers in Alberta, Saskatchewan, Manitoba
  
- **Foundations in Agricultural Industries for Refugees and Migrants (FARM) Socio-economic Impact Study**
  - 1 year grant funded by the Canadian Social Science and Humanities Research Council (SSHRC)
  - Collaboration with the Southern Alberta Institute of Technology
  - Examining the impact of agricultural job training and placement on the social and economic integration of refugees and newcomers

# The Immigrant Education Society

## **Current research projects:**

- Immigrant Access Counselling
  - 1.5 year grant with Alberta Labour
  - Collaboration with the University of Calgary
  - Examine the uses and limitations of an online settlement chat
  
- Language Brokering Initiative
  - 2 year grant by Calgary Foundation
  - Collaboration with University of Calgary
  - Examines practice of family-based translation and interpreting

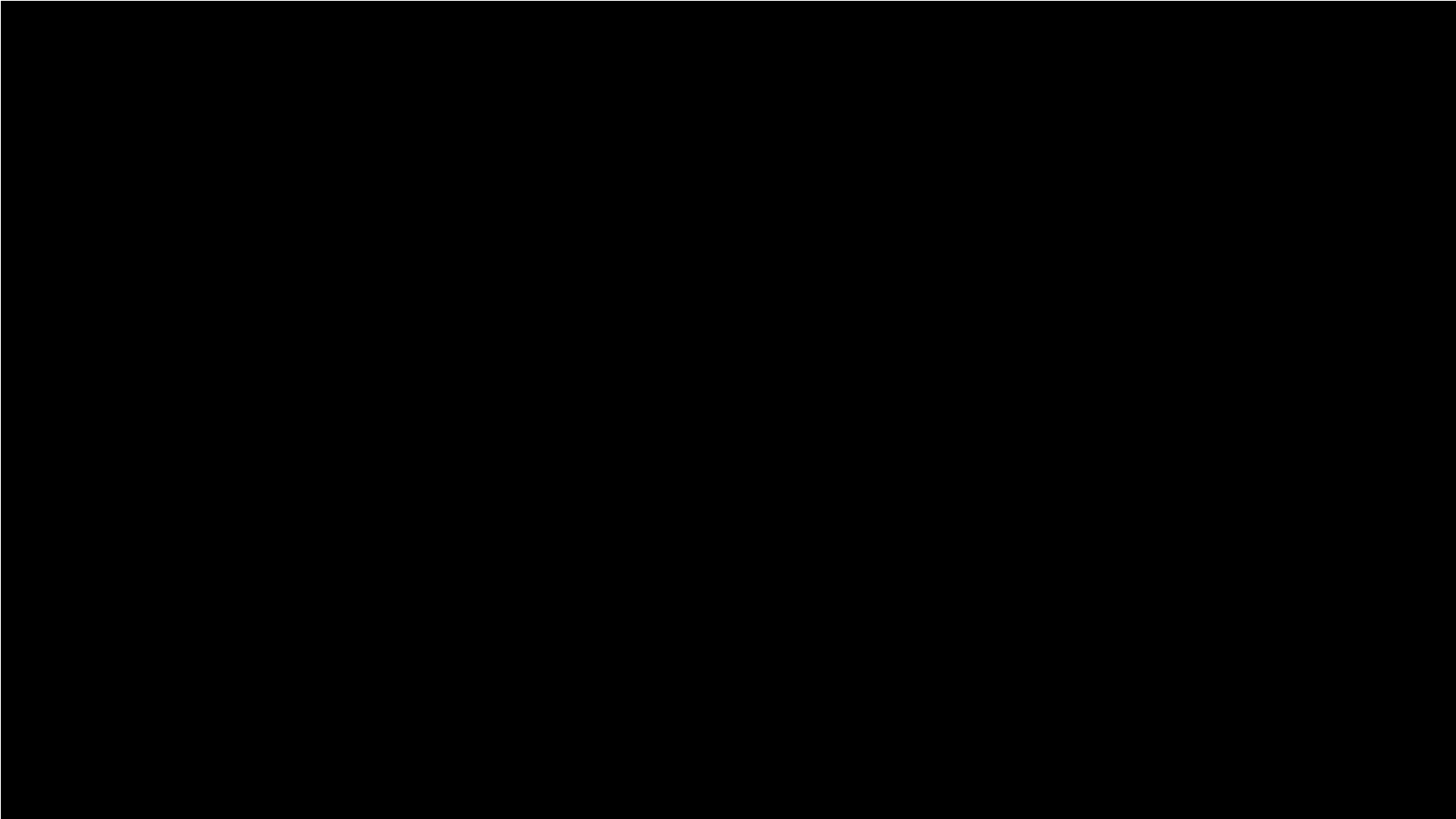


# The Immigrant Education Society

- Re-examine some of the discourses surrounding newcomer integration:
  - What is integration?
  - Is it limited to language learning and employment?
  - What is a newcomer?
  - What is a refugee?
  - What is a community?

# The Immigrant Education Society

- Re-examine some of the discourses surrounding newcomer integration:
  - Focus on mutual community building and belonging
  - humanizing/familiarizing
  - shifting the focus of public discussion
  - programming in areas where newcomers can be the teachers/sources of knowledge



# The Immigrant Education Society

- CBC News feature:
- <https://www.cbc.ca/news/canada/calgary/grow-garden-calgary-refugees-immigrants-community-1.4829871>